

NOTE:
Please read all instructions
carefully before using this
product

Safety Notice

Hardware Identifier

Assembly Instruction

Parts List

Resistance Chart

Warranty

Ordering Parts

Model
APEX II

Retain This
Manual for
Reference

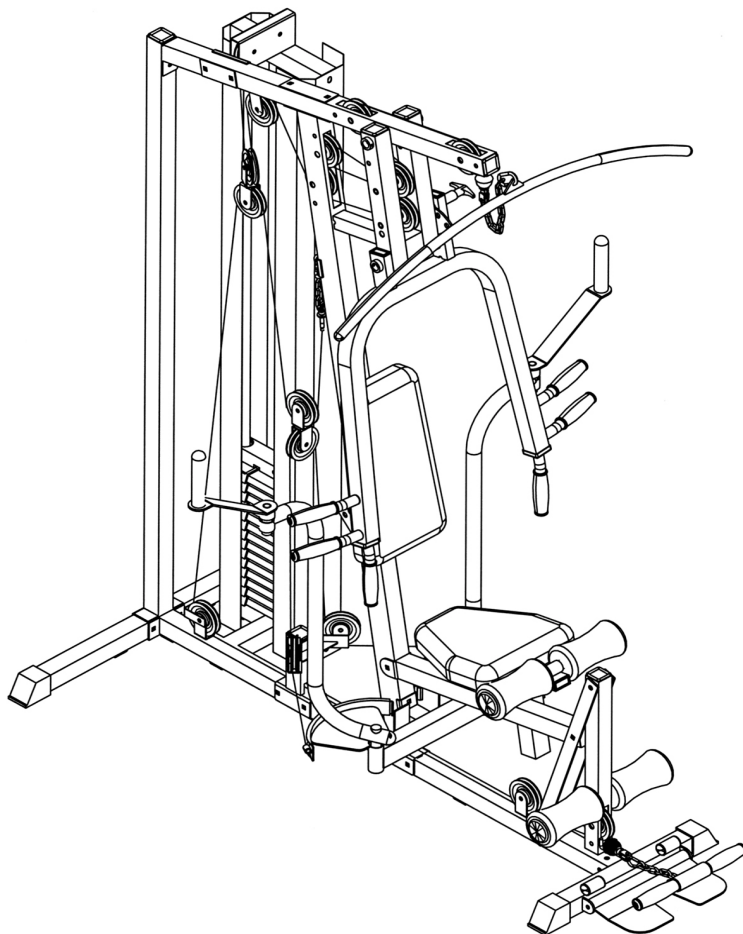
08-14-01

OWNER'S
MANUAL

IMPEX
FITNESS PRODUCTS

MARCY HOME GYM

APEX II



IMPEX FITNESS PRODUCTS

14777 DON JULIAN RD., CITY OF INDUSTRY, CA 91746

Tel: (800) 999-8899 Fax: (626) 961-9966

www.impex-fitness.com

info@impex-fitness.com

TABLE OF CONTENTS

BEFORE YOU BEGIN.....	1
IMPORTANT SAFETY NOTICES.....	2
HARDWARE IDENTIFIER.....	3
ASSEMBLY INSTRUCTIONS.....	4
HOW TO USE.....	18
PARTS LIST.....	19
RESISTANCE CHART.....	20
WARRANTY.....	21
ORDERING PARTS.....	21

BEFORE YOU BEGIN

Thank you for selecting the MARCY APEX II HOME GYM by IMPEX FITNESS PRODUCTS. For your safety and benefit, read this manual carefully before using the machine. As a manufacturer, we are committed to provide you complete customer satisfaction. If you have any questions, or find there are missing or damaged parts, we guarantee you complete satisfaction through direct assistance from our factory. To avoid unnecessary delays, *please call our TOO-FREE customer service number*. Our Customer Service Agents will provide immediate assistance to you.

Toll-Free Customer Service Number

1-800-999-8899

Mon. – Fri. 9 a.m. – 5 p.m. PST

www.impex-fitness.com

info@impex-fitness.com

IMPORTANT SAFETY NOTICE

PRECAUTIONS

This exercise machine is built for optimum safety. However, certain precautions apply whenever you operate a piece of exercise equipment. Be sure to read the entire manual before you assemble or operate your machine. In particular, note the following safety precautions:

1. **Keep children and pets away from the machine at all times. DO NOT leave children unattended in the same room with the machine.**
2. Only one person at a time should use the machine.
3. If the user experiences dizziness, nausea, chest pain, or any other abnormal symptoms, STOP the workout at once. CONSULT A PHYSICIAN IMMEDIATELY.
4. Position the machine on a clear, leveled surface. DO NOT use the machine near water or outdoors.
5. Keep hands away from all moving parts.
6. Always wear appropriate workout clothing when exercising. DO NOT wear robes or other clothing that could become caught in the machine. Running or aerobic shoes are also required when using the machine.
7. Use the machine only for its intended use as described in this manual. DO NOT use attachments not recommended by the manufacturer.
8. Do not place any sharp object around the machine.
9. Disabled person should not use the machine without a qualified person or physician in attendance.
10. Before using the machine to exercise, always do stretching exercises to properly warm up.
11. Never operate the machine if the machine is not functioning properly.

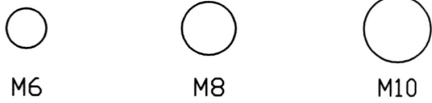
WARNING: BEFORE BEGINNING ANY EXERCISE PROGRAM, CONSULT YOUR PHYSICIAN. THIS IS ESPECIALLY IMPORTANT FOR INDIVIDUALS OVER THE AGE OF 35 OR PERSONS WITH PRE-EXISTING HEALTH PROBLEMS. READ ALL INSTRUCTIONS BEFORE USING ANY FITNESS EQUIPMENT. IMPEX INC. ASSUMES NO RESPONSIBILITY FOR PERSONAL INJURY OR PROPERTY DAMAGE SUSTAINED BY OR THROUGH THE USE OF THIS PRODUCT.

SAVE THESE INSTRUCTIONS.

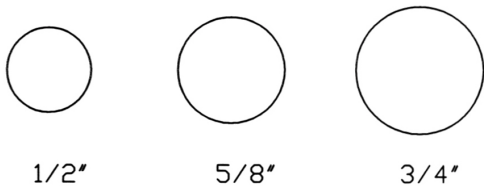
HARDWARE IDENTIFIER

PLACE WASHER, END OF BOLT, OR SCREW ON CIRCLE TO CHECK FOR CORRECT SIZE.

MILLIMETERS



INCHES



REPLACEMENT PARTS

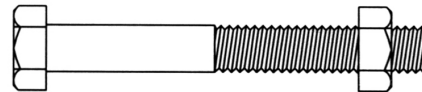
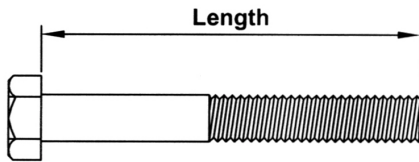
Thank you for purchasing IMPEX product. Although we go to great effort to ensure the quality of our products, Occasionally errors or omissions occur. Should you find either a defective or missing part in this product, Please contact us for a replacement at the telephone number.

QUESTION ?

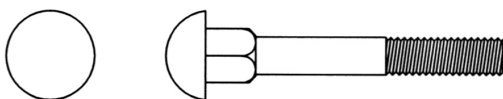


1-800-999-8899

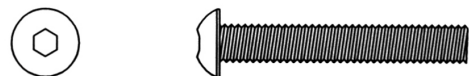
NOTE: When installing a Aircraft Nut (also called Nylon or Lock Nut), Please use two adjustable wrenches to tighten down the Nut. Hold down the Bolt with one wrench, and use the other wrench to turn the Nut clockwise.



HEX HEAD BOLT



CARRIAGE BOLT



ALLEN BOLT



AIRCRAFT NUT



FLAT WASHER

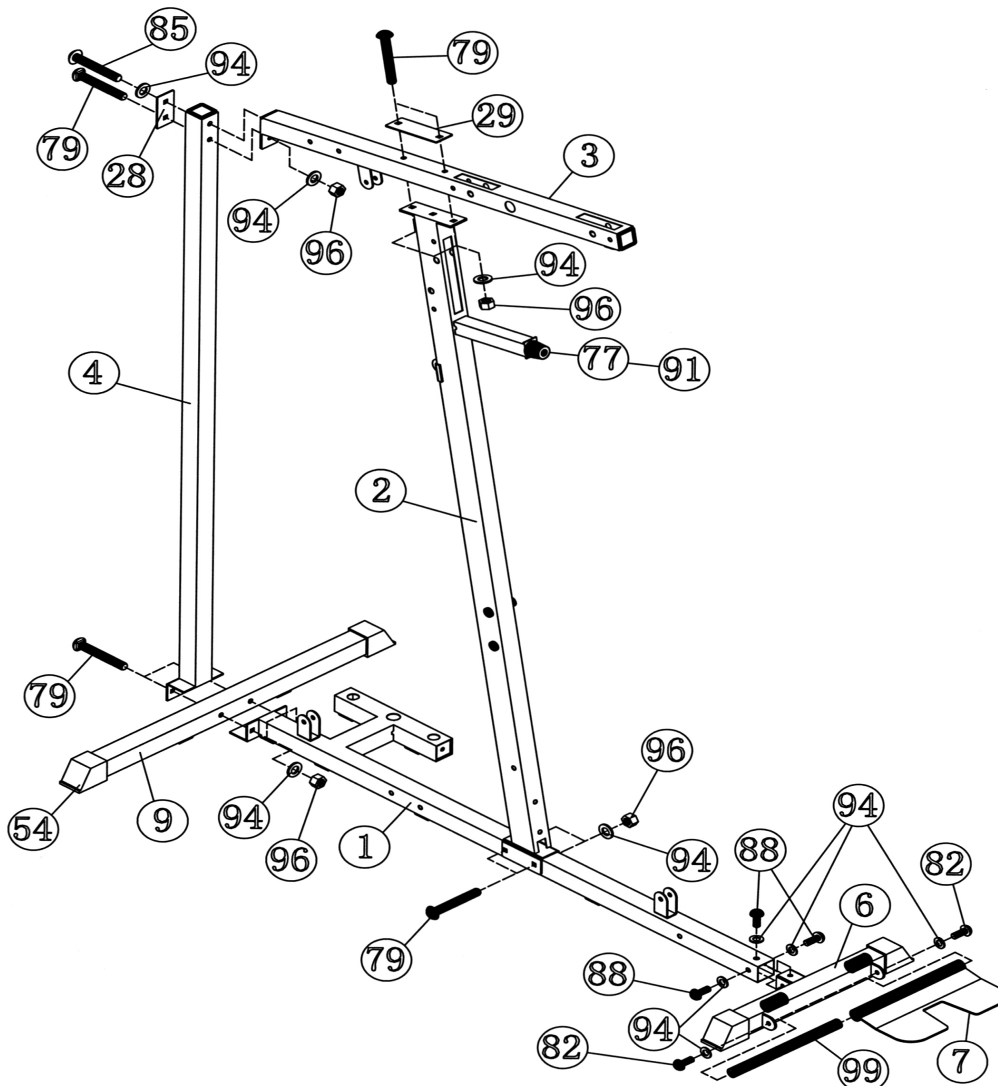
ASSEMBLY INSTRUCTION

Tools Required Assembling the Machine: Two Adjustable Wrenches, two Allen Wrenches, and one Flat Head Screwdriver. NOTE: It is strongly recommended this machine to be assembled by two or more people to avoid possible injury.

STEP 1 (See Diagram 1)

- A.) Connect the Main Base Frame (#1) and Rear Vertical Beam (#4) to the Rear Stabilizer (#9). Align the holes then secure them with two M10 x 2 3/4" Carriage Bolts (#79), Ø 3/4" Washers (#94), and M10 Aircraft Nuts (#96). DO NOT tighten all the nuts and bolts yet.
- B.) Attach the Front Stabilizer (#6) to the Main Base Frame (#1). Secure it with three M10 x 5/8" Allen Bolts (#88) and Ø 3/4" Washers (#94). Insert the Foot Plate Axle (#99) into the Foot Plate (#7). Attach the Foot Plate to the Front Stabilizer and secure it with two M10 x 3/4" Allen Bolts (#82) and Ø 3/4" Washers (#94).
- C.) Attach the Front Vertical Beam (#2) to the Main Base Frame (#1). Secure it with two M10 x 2 3/4" Carriage Bolts (#79), Ø 3/4" Washers (#94), and M10 Aircraft Nuts (#96).
- D.) Place the Upper Frame (#3) onto the Front Vertical Beam (#2). Secure it with a 6 1/4" Bracket (#29), two M10 x 2 3/4" Carriage Bolts (#79), Ø 3/4" Washers (#94), and M10 Aircraft Nuts (#96).
- E.) Attach the rear of Upper Frame (#3) to the Rear Vertical Beam (#4). Secure it with a 4" Bracket (#28), M10x2 1/2" Allen Bolt (#85) and Ø 3/4" Washer (#94) to the upper hole. Secure the lower hole with a M10 x 2 3/4" Carriage Bolt (#79), Ø 3/4" Washer (#94), and M10 Aircraft Nut (#96).

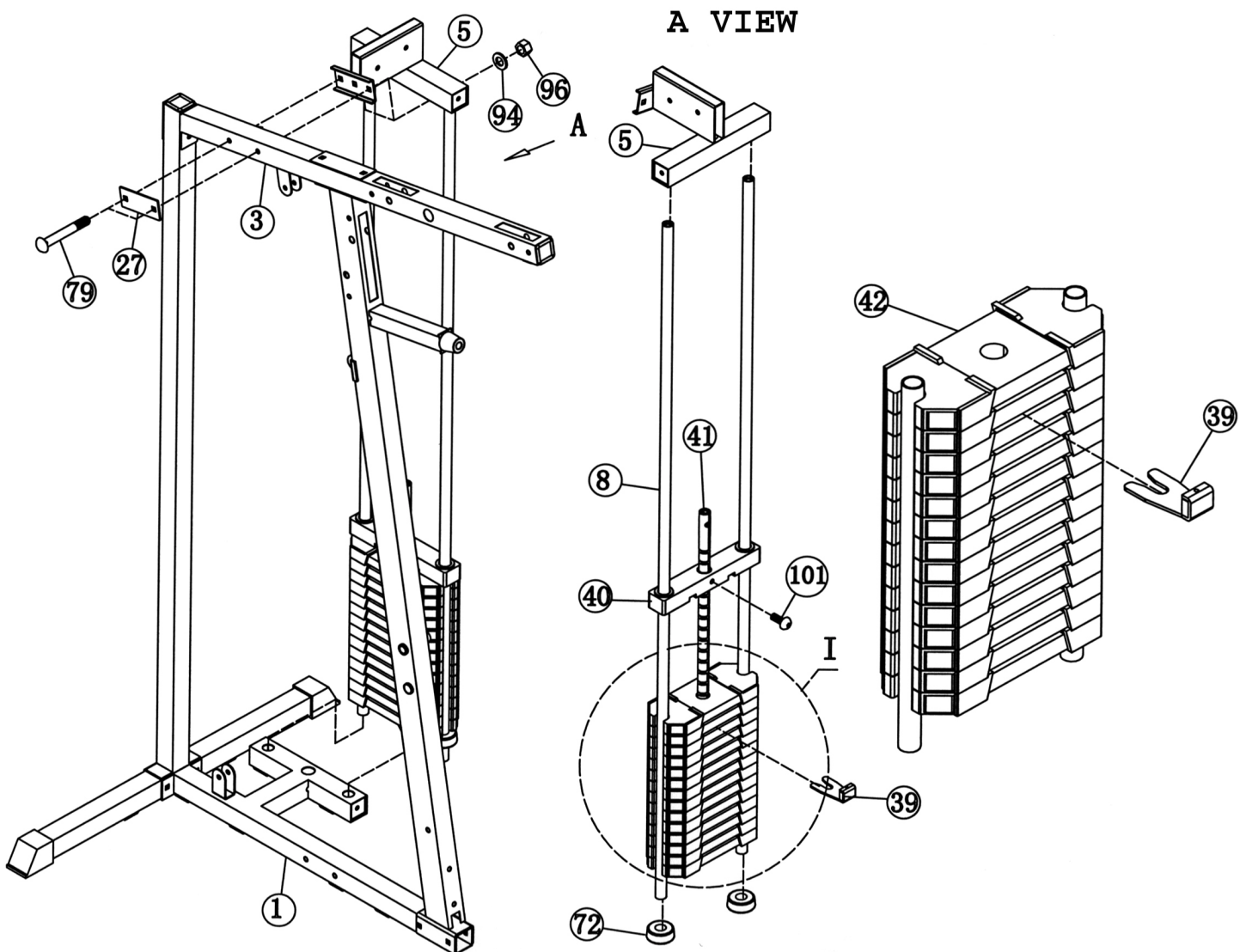
DIAGRAM 1



STEP 2 (See Diagram 2)

- A.) Place two Rubber Bumpers (#72) onto the Main Base Frame (#1). Align the holes and push two Guide Rods (#8) through the Bumpers into the Main Base Frame (#1).
- B.) Install fourteen Weight Plates (#42). To install the plate, hold the plate at an angle and place it in between the two Guide Rods then drop it down. NOTE: Make sure the grooves on the plastic covers all face up. Insert the Selector Rod (#41) into the center hole on the plates. Slide the Selector Stem (#40) onto the Guide Rods (#8) from the top. Align the holes and secure the Selector Stem (#40) to the Selector Rod (#41) with a M10 x 1 3/4" Allen Bolt (Full Thread) (#101).
- C.) It is strongly recommended to spray lubricant such as WD-40 on the two Guide Rods to minimize friction. Please note this machine comes with 14 plates. You can purchase another 5 more plates (Model no. WK51) in the future to increase the weights.
- D.) Attach the Top Socket Assembly (#5) to the top of the Guide Rods (#8). Secure the Assembly to the Upper Frame (#3) with a 4 3/4" Bracket (#27), two M10 x 2 3/4" Carriage Bolts (#79), two $\text{\O} \frac{3}{4}$ " Washers (#94), and two M10 Aircraft Nuts (#96).
- E.) Insert the Weight Selector Pin (#39) into the selected stack of Weight Plates to obtain the desired weights for exercise. Make sure the magnet on the Pin faces up.
- F.) Securely tighten all the nuts and bolts previously installed.

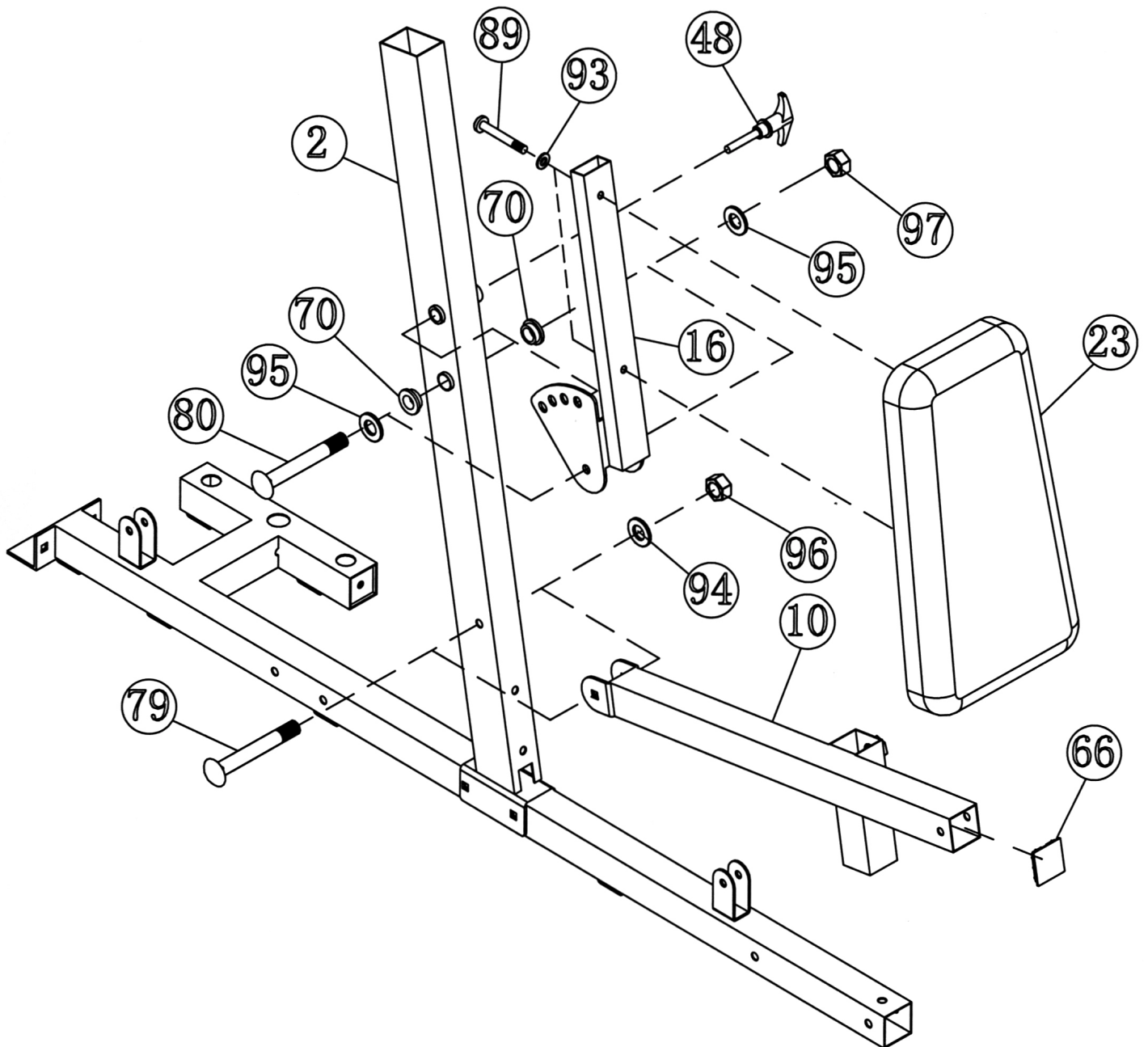
DIAGRAM 2



STEP 3 (See Diagram 3)

- A.) Attach the Backrest Board (#23) to the Backrest Support (#16). Secure it with two M8 x 1 5/8" Allen Bolts (#89) and \varnothing 5/8" Washers (#93).
- B.) Push two \varnothing 1" Bushings (#70) to the holes on the Front Vertical Beam (#2) from both sides. Attach the Backrest Support (#16) to the holes. Secure it with one M12 x 3 1/2" Allen Bolt (#80), two \varnothing 1" Washers (#95), and one M12 Aircraft Nut (#97). Secure the Backrest Support with a Pull Pin (#48) on the Front Vertical Beam (#2).
- C.) Attach the Seat Support (#10) to the Front Vertical Beam (#2). Secure it with One M10 x 2 3/4" Carriage Bolt (#79), \varnothing 3/4" Washer (#94), and M10 Aircraft Nut (#96). Push a 2" Flat End Cap (#66) into the front end of the Seat Support (#10).

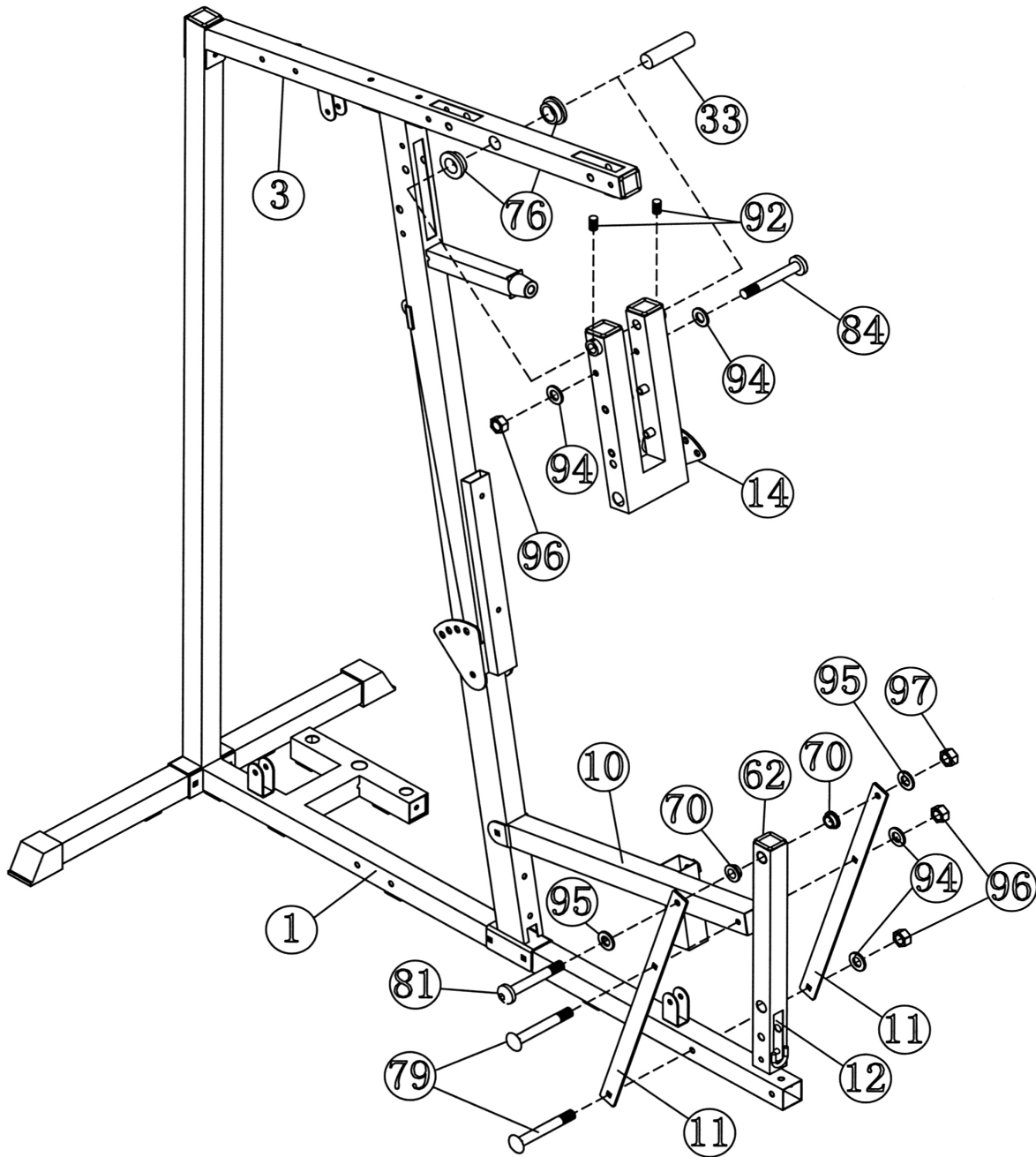
DIAGRAM 3



STEP 4 (See Diagram 4)

- A.) Attach two $\text{Ø}1\ 5/8"$ x $1/4"$ Bushings (#76) to the holes on the Upper Frame (#3). Attach the Front Press Base (#14) to the Bushings. Align the holes then insert a 7" Axle (#33) through the holes. Secure the Axle with two M6 x $1/4"$ Slotted Set Screws (#92).
- B.) Insert a M10 x $6\ 3/4"$ Allen Bolt (#84) through the upper holes on the Front Press Base (#14). Securely tighten it with two $\text{Ø}\ 3/4"$ Washers (#94) and one M10 Aircraft Nut (#96).
- C.) Attach two Front Support Frames (#11) to the Main Base Frame (#1). Secure it with one M10 x $2\ 3/4"$ Carriage Bolt (#79), $\text{Ø}\ 3/4"$ Washer (#94), and M10 Aircraft Nut (#96).
- D.) Attach the Frames to the Seat Support (#10). Secure them with one M10 x $2\ 3/4"$ Carriage Bolt (#79), $\text{Ø}\ 3/4"$ Washer (#94), and M10 Aircraft Nut (#96).
- E.) Attach two $\text{Ø}1"$ Bushings (#70) to the Leg Developer (#12). Place the Leg Developer in between the two Support Frames. Align the holes and secure it with one M12 x 3" Allen Bolt (#81), two $\text{Ø}1"$ Washers (#95), and one M12 Aircraft Nut (#97).

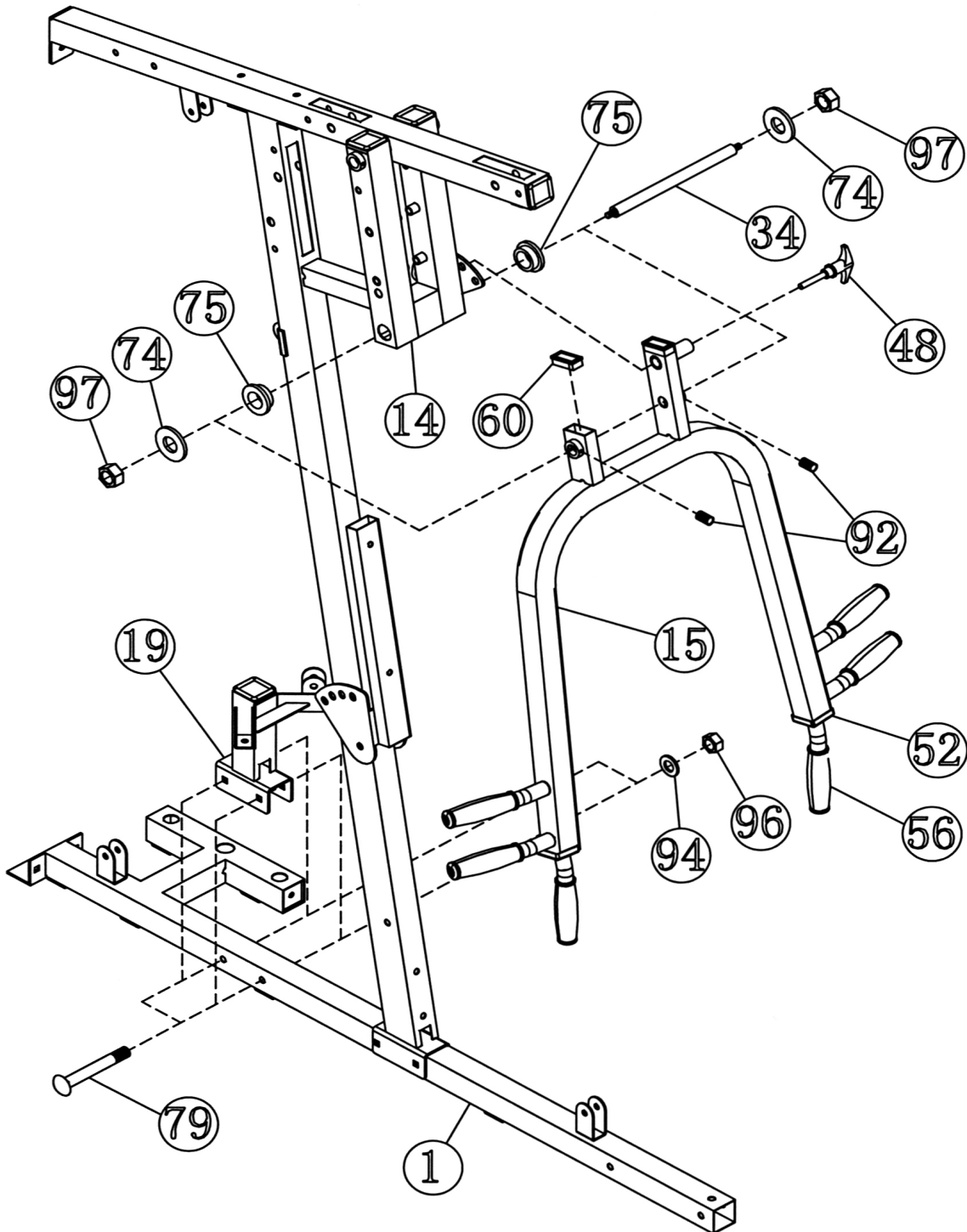
DIAGRAM 4



STEP 5 (See Diagram 5)

- A.) Attach two $\text{Ø}1\ 5/8'' \times 1/2''$ Bushings (#75) to the Front Press Base (#14). Attach the Front Press (#15) to the Base. Align the holes then insert a M12 x 10 $3/4''$ Axle (#34) through the holes. Secure the Axle with two $\text{Ø}1\ 1/4''$ Washers (#74) and two M12 Aircraft Nuts (#97). Note: Do not over tighten the nuts. Make sure the Front Press is able to Swivel.
- B.) Secure the two M6 x $1/4''$ Slotted Set Screws (#92) on the Front Press with a Flat Head Screwdriver. Attach a Pull Pin (#48) to the left side of Front Press (#15).
- C.) Attach the Butterfly Pulley Bracket (#19) onto the Main Base Frame (#1). Secure it with two M10 x 2 $3/4''$ Carriage Bolts (#79), $\text{Ø} 3/4''$ Washers (#94), and M10 Aircraft Nuts (#96).

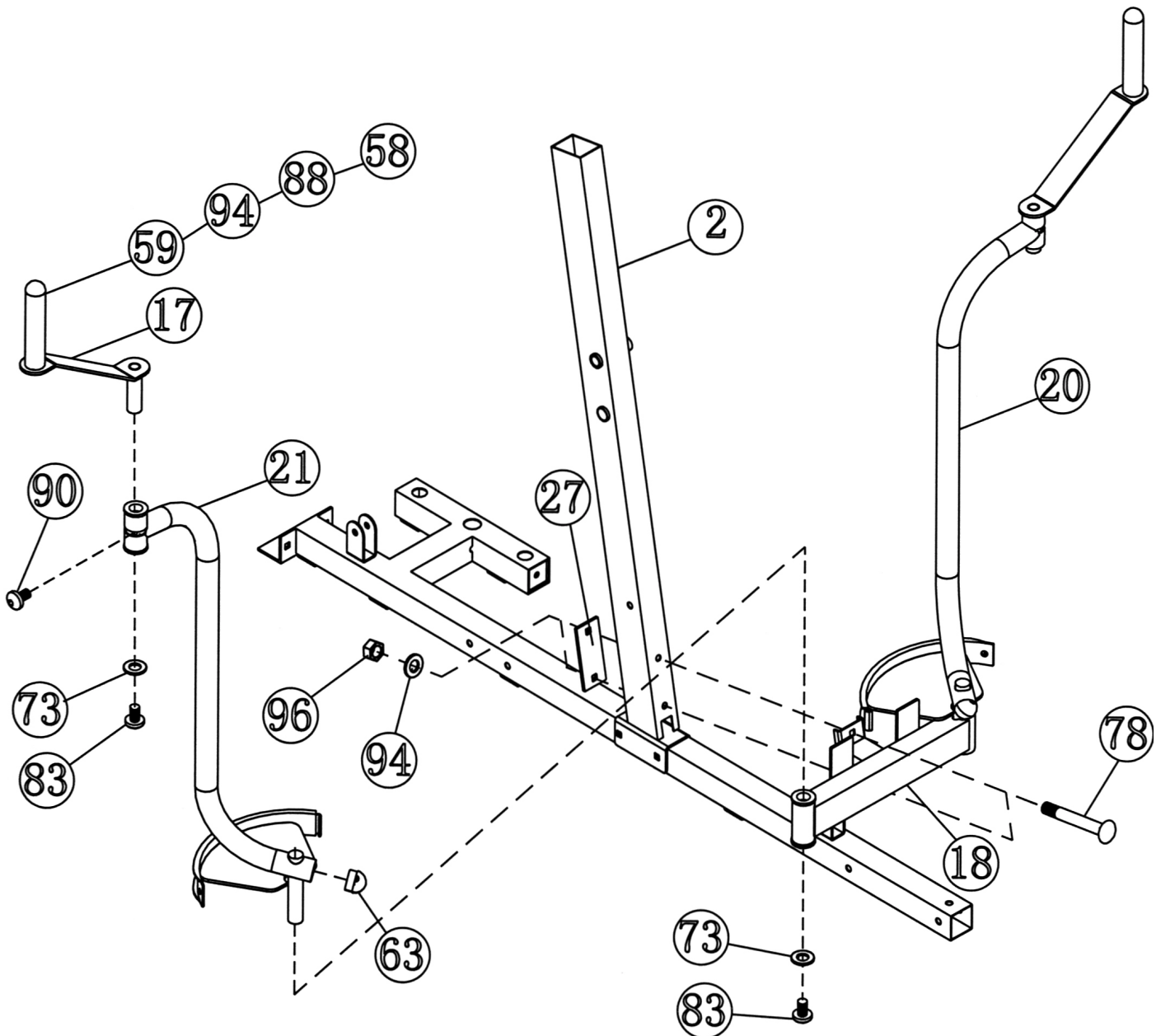
DIAGRAM 5



STEP 6 (See Diagram 6)

- A.) Attach the Butterfly Base (#18) to the Front Vertical Beam (#2). Secure it with one 4 3/4" Bracket (#27), two M10 x 3 1/2" Carriage Bolts (#78), \varnothing 3/4" Washers (#94), and M10 Aircraft Nuts (#96).
- B.) Insert the Right Butterfly (#21) through the right hole on the Butterfly Base. Secure it with one M12 x 5/8" Allen Bolt (#83) and \varnothing 1 1/2" Washer (#73). Plug a \varnothing 1 1/2" Round End Cap (#63) to the end opening on the Butterfly. Repeat the same step to install the other side.
- C.) Insert one Butterfly Handle (#17) through the pivot hole on the Right Butterfly (#21). Secure it with one M12 x 5/8" Allen Bolt (#83) and \varnothing 1 1/2" Washer (#73). Secure a M10 x 1" Allen Bolt (Half Thread) (#90) through the slotted hole on the pivot into the Handle. Repeat the same step to install the other side.

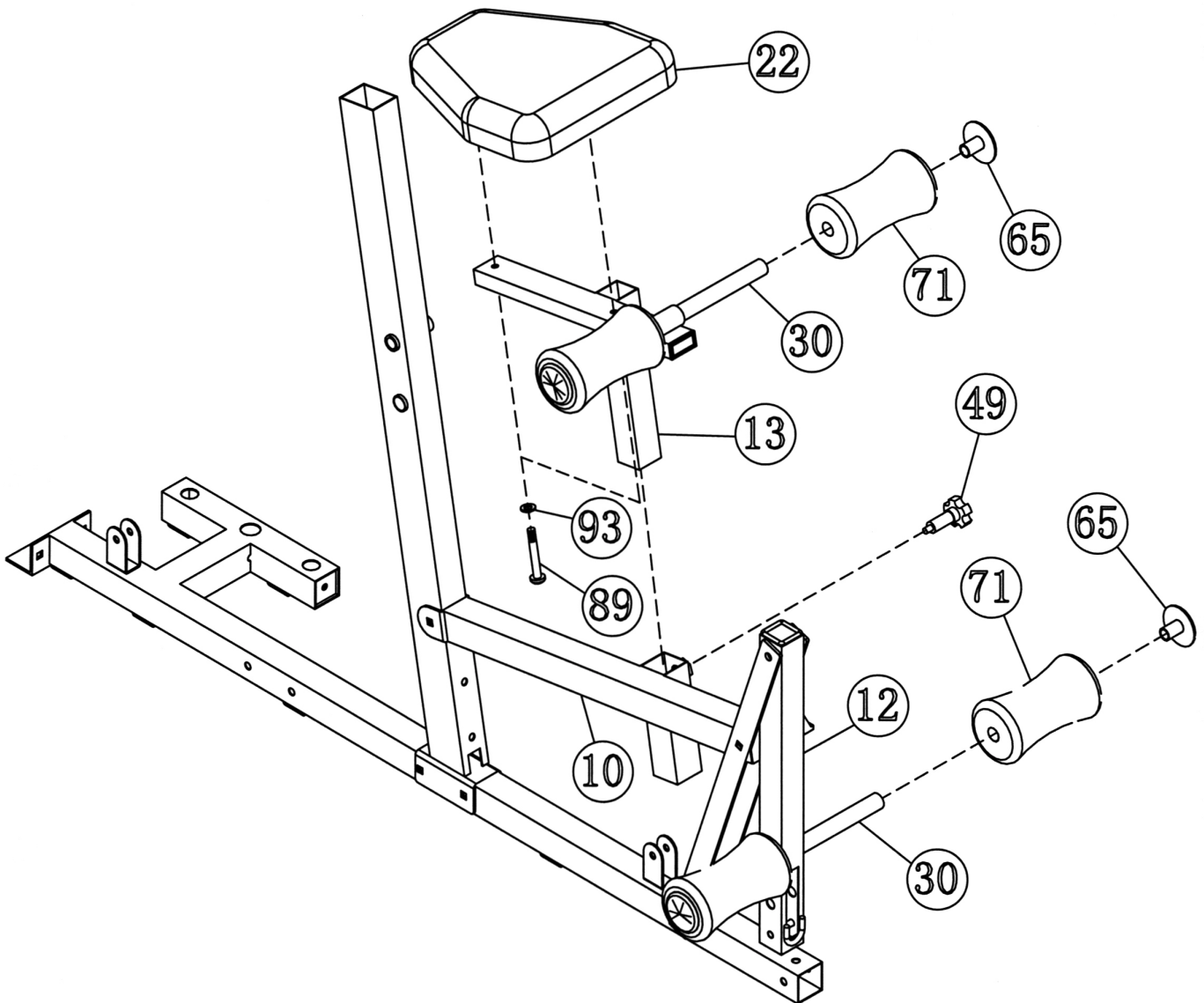
DIAGRAM 6



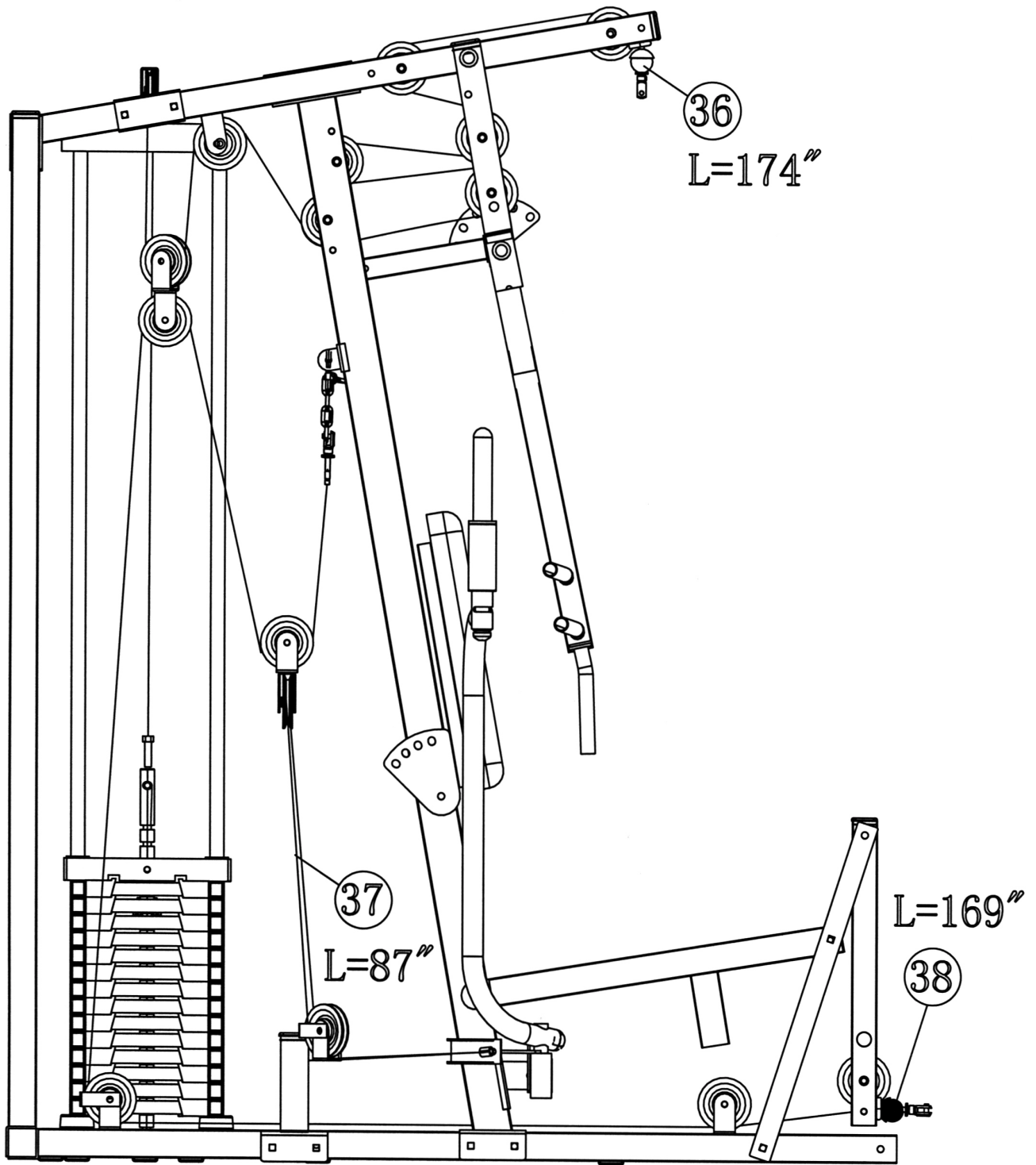
STEP 7 (See Diagram 7)

- A.) Place the Seat Pad (#22) onto the Seat Post (#13). Secure it with two M8 x 1 5/8" Allen Bolts (#89) and \varnothing 5/8" Washers (#93). Insert the Seat Post (#13) into the opening on the Seat Support (#10). Thread a Lock Knob (#49) on the Seat Support (#10) to obtain the desired height of the Seat.
- B.) Insert one Foam Roll Tube (#30) halfway through the hole on the Seat Post (#13). Insert one Foam Roll Tube (#30) halfway through the hole on the Leg Developer (#12). Push four Foam Rolls (#71) onto the Tubes. Plug four Foam Roll End Caps (#65) to the ends.

DIAGRAM 7



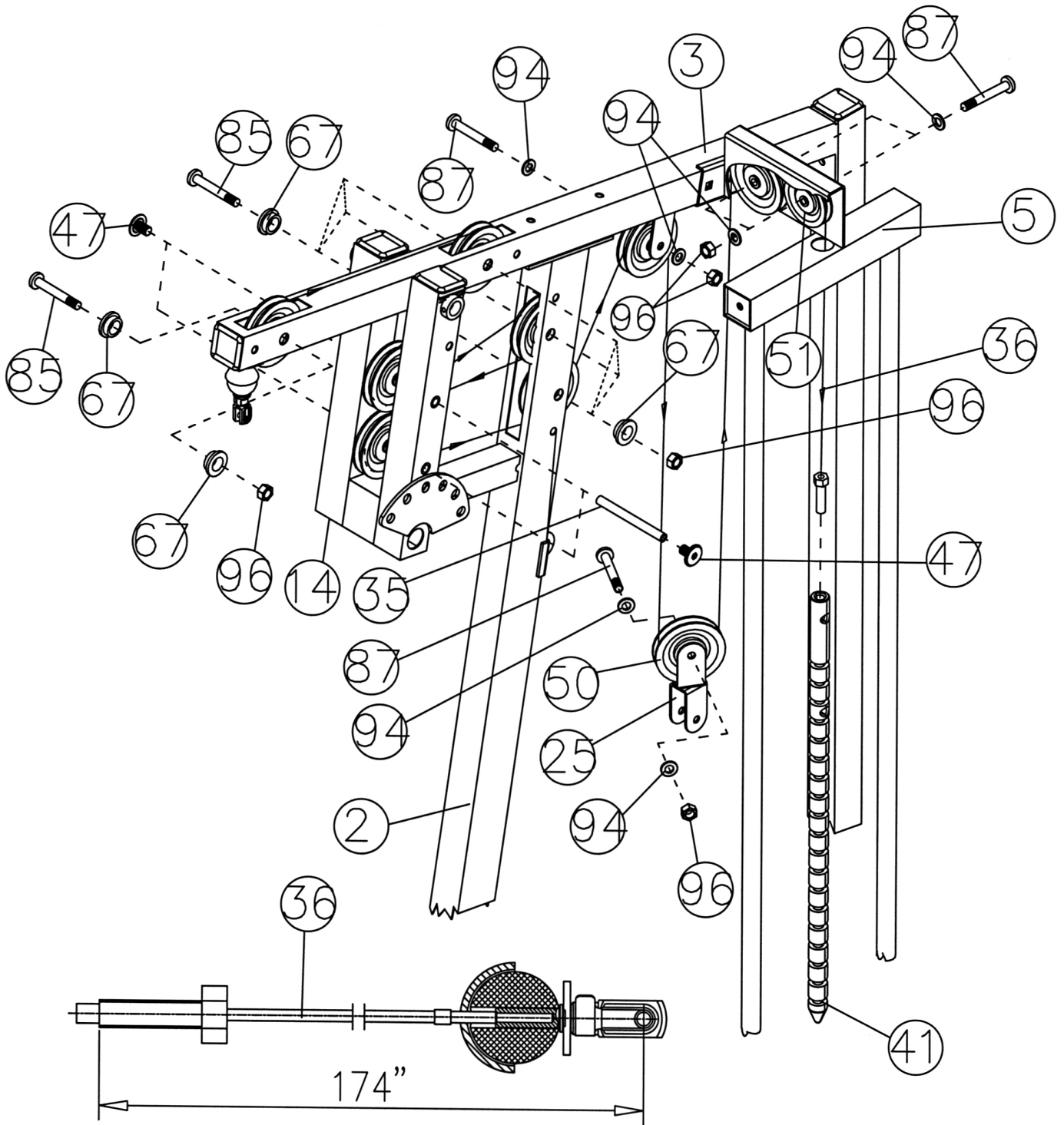
CABLE LOOP DIAGRAM



STEP 8 (See Diagram 8 & Cable Loop Diagram)

- A.) Attach the 174" Upper Cable (#36) to the opening at the front of the Upper Frame (#3). Note: The Ball Stopper on the cable should be underneath the Frame.
- B.) Attach a Pulley (#50) to the slotted opening. Then attach two $\text{Ø}7/8" \times 5/8"$ Pulley Bushings (#67) to the holes on both sides. Align the holes and secure it with one M10 x 2 1/2" Allen Bolt (#85) and M10 Aircraft Nut (#96).
- C.) Draw the Cable towards the back of the machine to the opening on the Upper Frame. Repeat the step B above to install a Pulley.
- D.) Draw the Cable around the Pulley then pull back towards the upper opening on the Front Press Base (#14).
- E.) Attach a Pulley to the opening in between the Front Press Base. Secure the Pulley with one M8 x 6 1/4" Axle (#35) and two M8 x 1/2" Allen Bolts (#47).
- F.) Draw the Cable around the Pulley then pull back towards the upper opening on the Front Vertical Beam (#2). Repeat the step B above to install a Pulley.
- G.) Draw the Cable around the Pulley then pull the Cable back towards the lower opening on the Front Press Base. Repeat the step D above to install a Pulley.
- H.) Install another pulley to the lower opening on the Front Vertical Beam (#2) as described in Step B above. Draw the Cable underneath the Pulley towards the back of the machine to the first bracket on the Upper Frame (#3).
- I.) Attach a Pulley to the Bracket. Secure it with one M10 x 1 3/4" Allen Bolt (#87), two $\text{Ø} 3/4"$ Washers (#94), and one M10 Aircraft Nut (#96). Pull the Cable over the Pulley and downward.
- J.) Attach a Pulley to the Cable. Place the Pulley in between an Angled Double Floating Pulley Bracket (#25). Secure the Pulley with one M10 x 1 3/4" Allen Bolt (#87), two $\text{Ø} 3/4"$ Washers (#94), and one M10 Aircraft Nut (#96). Let the Bracket hanging for now.
- K.) Pull the Cable upward towards the Top Socket Assembly (#5). Install a Pulley (#50) to the first hole. Then install another Small Pulley (#51) to the second hole. Draw the Cable over the two Pulleys then downward to the Selector Rod (#41). Thread the tip of the Cable into the hole on the Selector Rod.

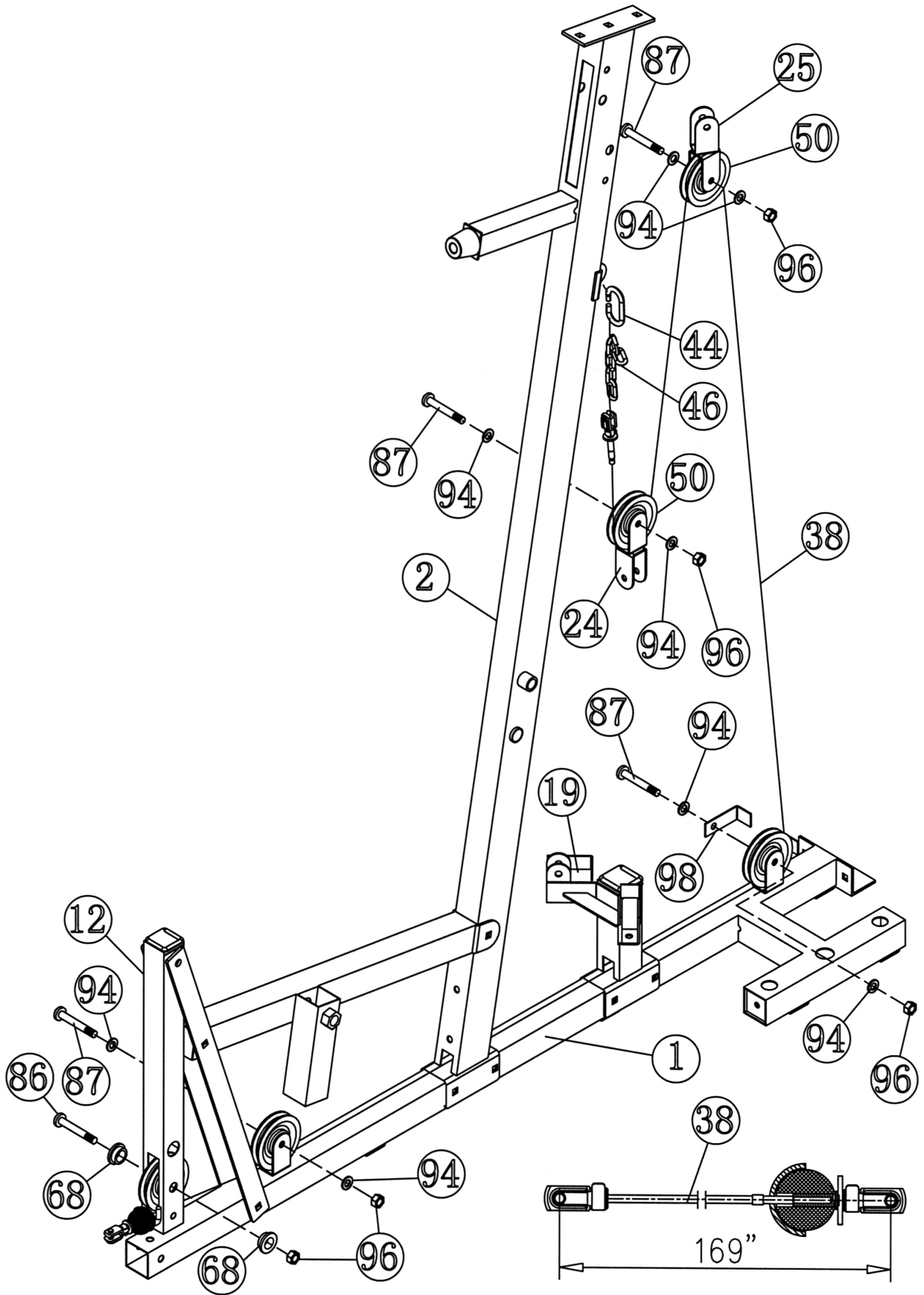
DIAGRAM 8



STEP 9 (See Diagram 9 & Cable Loop Diagram)

- A.) Attach the 169" Lower Cable (#38) to the opening on the Leg Developer (#12). Place a Pulley (#50) in the opening. Secure it with one M10 x 2 3/8" Allen Bolt (#86), two $\varnothing 7/8$ " x 1/2" Pulley Bushings (#68), and one M10 Aircraft Nut (#96).
- B.) Draw the Cable underneath the Pulley and towards the back of the machine to the open bracket on the Main Base Frame (#1). Attach a Pulley to the Bracket then secure it with one M10 x 1 3/4" Allen Bolt (#87), two $\varnothing 3/4$ " Washers (#94), and one M10 Aircraft Nut (#96).
- C.) Draw the Cable through the opening on the bottom of Front Vertical Beam (#2). Continue drawing along the Main Base Frame (#1) through the opening on the Butterfly Pulley Bracket (#19) to the open bracket on the back. Attach a Pulley to the open bracket. Secure it with one M10 x 1 3/4" Allen Bolt (#87), two $\varnothing 3/4$ " Washers (#94), one 2 7/8" L-shaped Bracket (#98), and one M10 Aircraft Nut (#96).
- D.) Draw the Cable underneath the Pulley then pull upward to the Angled Double Pulley Bracket (#25) previously installed in Step 8. Attach a Pulley to the Bracket and secure it with one M10 x 1 3/4" Allen Bolt (#87), two $\varnothing 3/4$ " Washers (#94), and one M10 Aircraft Nut (#96). Pull the Cable around the Pulley and downward.
- E.) Attach a Pulley to the cable. Install the Pulley in between a Crossed Double Floating Pulley Bracket (#24). Draw the Cable around the Pulley and pull upward. Connect a Short Chain (#46) to the end of the Cable. Let the Bracket hanging for now.
- F.) Attach the Short Chain to the Front Vertical Beam (#2) by using a C-clip (#44). Note: After completing the installation, check the tightness of the cable loop. If the cable is too loose, shorten the chain.

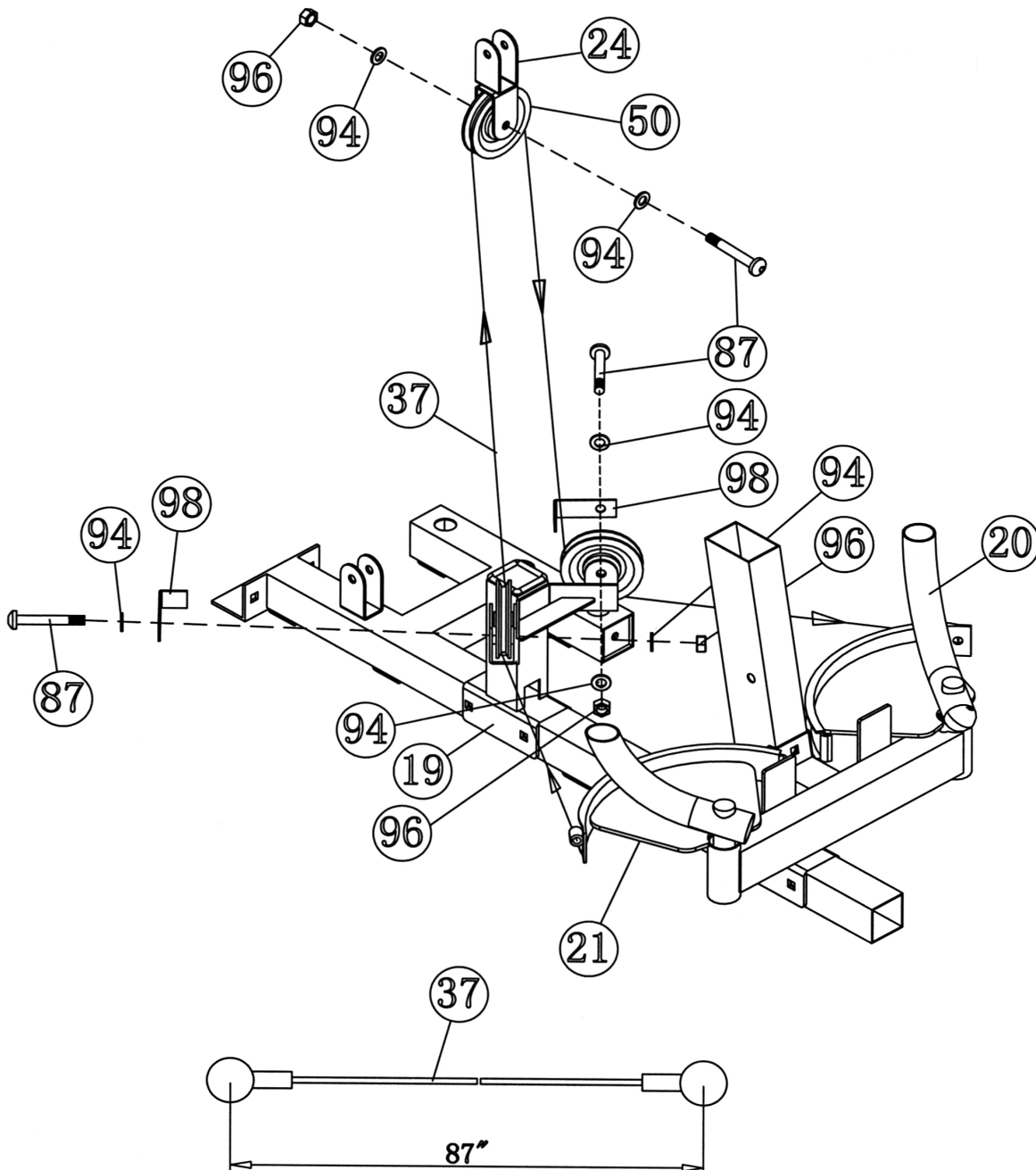
DIAGRAM 9



STEP 10 (See Diagram 10 & Cable Loop Diagram)

- A.) Attach one end of the 87" Butterfly Cable (#37) to the clip on the Right Butterfly (#21). Draw the Cable to the right open bracket on the Butterfly Pulley Bracket (#19).
- B.) Attach a Pulley to the Bracket and secure it with one M10 x 1 3/4" Allen Bolt (#87), two Ø 3/4" Washers (#94), one 2 7/8" L-shaped Bracket (#98), and one M10 Aircraft Nut (#96).
- C.) Draw the Cable underneath the Pulley then pull upward to the Crossed Double Floating Pulley Bracket (#24) previously installed in Step 9. Install another Pulley.
- D.) Pull the Cable around the Pulley then downward back to the Butterfly Pulley Bracket (#19). Repeat the procedure (B) above to install another Pulley.
- E.) Pull the Cable underneath the Pulley towards the Left Butterfly (#20). Attach the end of the Cable to the clip on the Left Butterfly (#20).

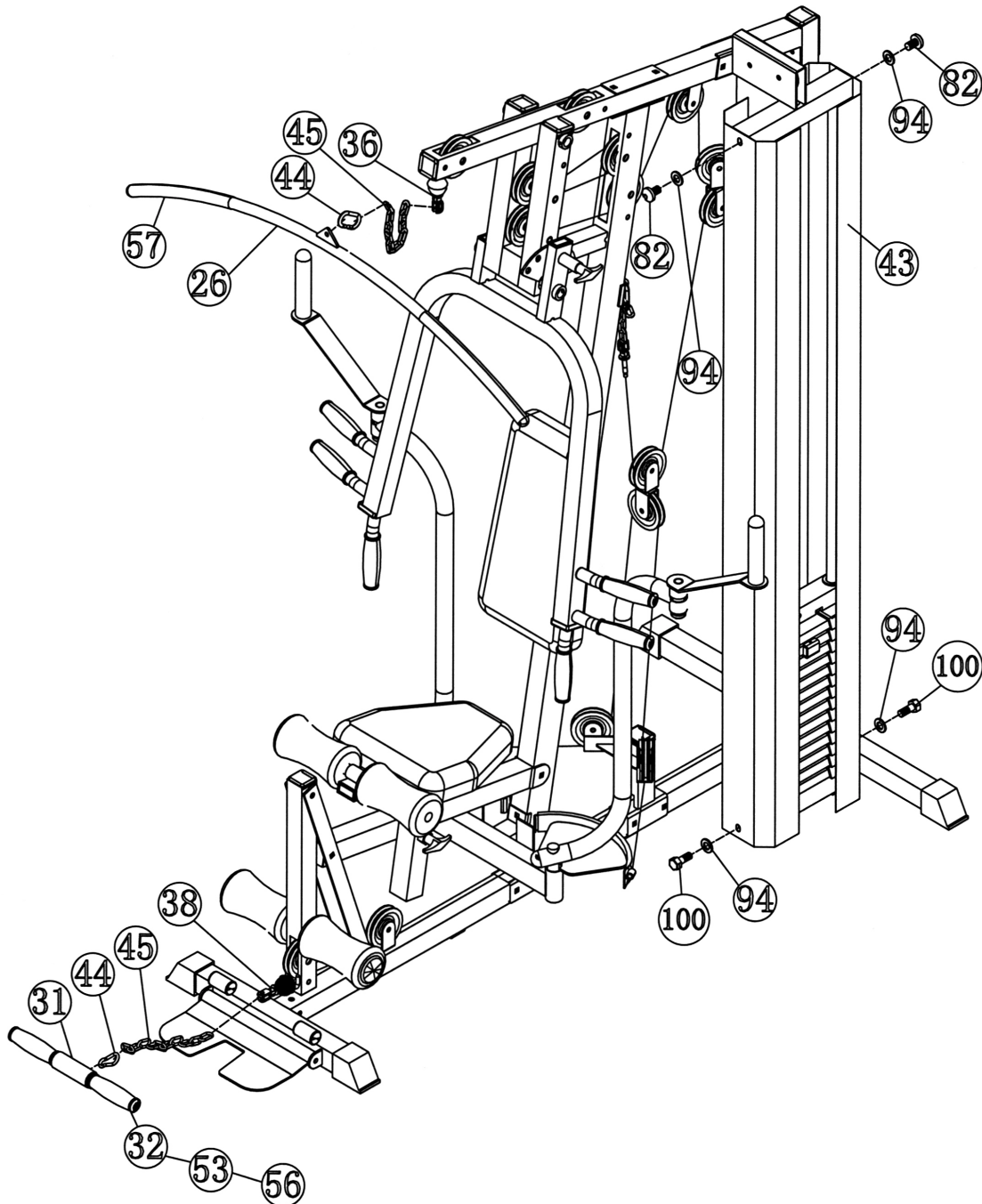
DIAGRAM 10



STEP 11 (See Diagram 11)

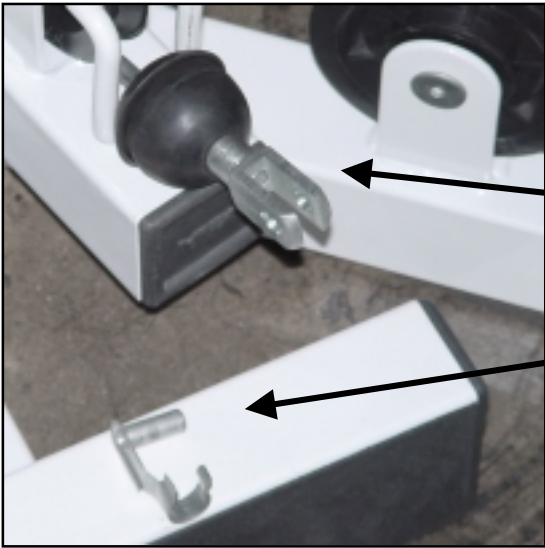
- A.) Attach a Long Chain (#45) to the Upper Cable (#36). Attach the Lat Bar (#26) to the Chain using a C-clip (#44). Adjust the length of the Chain to obtain desired Lat Bar exercise position. See How to Use on page 18.
- B.) Attach a Long Chain (#45) to the Lower Cable (#38). Attach the Arm Curl Handle (#31) to the Chain using a C-clip (#44). Adjust the length of the Chain to obtain the desired Arm Curl exercise position. Remove the Chain and the Handle when using the Leg Developer.
- C.) Attach two Weight Stack Covers (#43) to the Top Socket Assemble (#5) and Main Base Frame (#1). Secure the top with two M10 x 3/4" Allen Bolts (#82) and \varnothing 3/4" Washers (#94). Secure the bottom with two M10 x 3/4" Hex Bolts (#100) and \varnothing 3/4" Washers (#94).

DIAGRAM 11



HOW TO USE

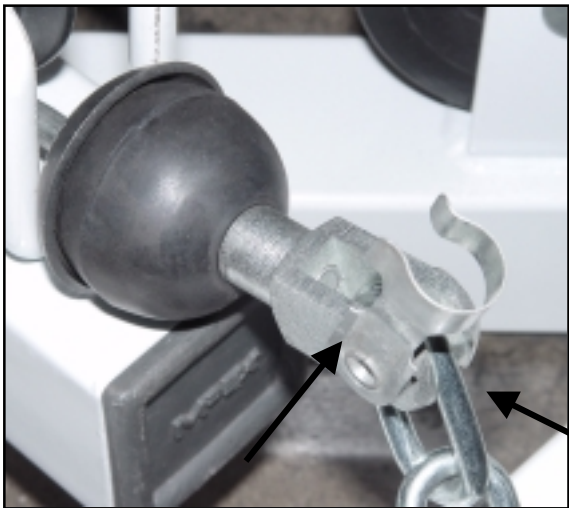
How to use the quick release connector.



The Clip is removed from the Connector.

Connector

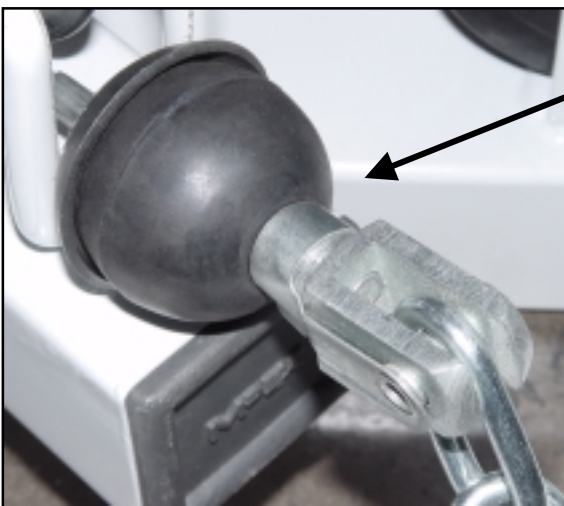
Clip



Place the chain in between the connector and insert the Clip through the holes.

Chain

Insert



Push down the Clip to secure.

PARTS LIST

KEY NO.	DESCRIPTION	Q'ty			
1	Main Base Frame	1	51	Small Pulley	1
2	Front Vertical Beam	1	52	1 3/4" Sleeve	2
3	Upper Frame	1	53	Ø 1 1/2" Plastic Bushing	2
4	Rear Vertical Beam	1	54	2" Square End Cap	4
5	Top Socket Assembly	1	55	Ø 1 3/8" Bushing	2
6	Front Stabilizer	1	56	Short Handle Grip	8
7	Foot Plate	1	57	Lat Bar Grip	2
8	Guide Rod	2	58	Butterfly Handle Grip	2
9	Rear Stabilizer	1	59	Swivel Sleeve	2
10	Seat Support	1	60	1" x 2" End Cap	6
11	Front Support Frame	2	61	2" End Cap (Impex Logo)	7
12	Leg Developer	1	62	1 3/4" End Cap (Impex Logo)	2
13	Seat Post	1	63	Ø 1 1/2" Round End Cap	2
14	Front Press Base	1	64	1 1/4" End Cap	4
15	Front Press	1	65	Foam Roll End Cap	4
16	Backrest Support	1	66	2" Flat End Cap	1
17	Butterfly Handle	2	67	Ø 7/8" x 5/8" Pulley Bushing	8
18	Butterfly Base	1	68	Ø 7/8" x 1/2" Pulley Bushing	2
19	Butterfly Pulley Bracket	1	69	Ø 1 1/2" Bushing	8
20	Left Butterfly	1	70	Ø 1" Bushing	4
21	Right Butterfly	1	71	Foam Roll	4
22	Seat Pad	1	72	Rubber Bumper	2
23	Backrest Board	1	73	Ø 1 1/2" Washer	4
24	Crossed Double Floating Pulley Bracket	1	74	Ø 1 1/4" Washer	2
25	Angled Double Pulley Bracket	1	75	Ø 1 5/8" x 1/2" Bushing	2
26	Lat Bar	1	76	Ø 1 5/8" x 1/4" Bushing	2
27	4 3/4" Bracket	2	77	Rubber Stopper	1
28	4" Bracket	1	78	M10 x 3 1/2" Carriage Bolt	2
29	6 1/4" Bracket	1	79	M10 x 2 3/4" Carriage Bolt	14
30	Foam Roll Tube	2	80	M12 x 3 1/2" Allen Bolt	1
31	Arm Curl Handle	1	81	M12 x 3" Allen Bolt	1
32	Arm Curl Handle Tube	1	82	M10 x 3/4" Allen Bolt	4
33	7" Axle	1	83	M12 x 5/8" Allen Bolt	4
34	M12 x 10 3/4" Axle	1	84	M10 x 6 3/4" Allen Bolt	1
35	M8 x 6 1/4" Axle	2	85	M10 x 2 1/2" Allen Bolt	5
36	Upper Cable (174")	1	86	M10 x 2 3/8" Allen Bolt	1
37	Butterfly Cable (87")	1	87	M10 x 1 3/4" Allen Bolt	11
38	Lower Cable (169")	1	88	M10 x 5/8" Allen Bolt	5
39	Weight Selector Pin	1	89	M8 x 1 5/8" Allen Bolt	4
40	Selector Stem	1	90	M10 x 1" Allen Bolt (Half Thread)	2
41	Selector Rod	1	91	M6 x 5/8" Philips Screw	1
42	Weight Plate	14	92	M6 x 1/4" Slotted Set Screw	4
43	Weight Stack Cover	2	93	Ø 5/8" Washer	4
44	C-clip	3	94	Ø 3/4" Washer	52
45	Long Chain	2	95	Ø 1" Washer	4
46	Short Chain	1	96	M10 Aircraft Nut	33
47	M8 x 1/2" Allen Bolt	4	97	M12 Aircraft Nut	4
48	Pull Pin	2	98	2 7/8" L-shaped Bracket	3
49	Lock Knob	1	99	Foot Plate Axle	1
50	Pulley	17	100	M10 x 3/4" Hex Bolt	2
			101	M10x1 3/4" Allen Bolt (Full Thread)	1

APEX II WEIGHT RESISTANCE CHART

		Weight Plate													
		1	2	3	4	5	6	7	8	9	10	11	12	13	14
Front Press	11	22	33	44	55	66	77	88	99	110	121	132	143	154	
Leg Developer	10	20	30	40	50	60	70	80	90	100	110	120	130	140	
Lat Pull	10	20	30	40	50	60	70	80	90	100	110	120	130	140	
Low Pulley	10	20	30	40	50	60	70	80	90	100	110	120	130	140	
Butterfly	5	10	15	20	25	30	35	40	45	50	55	60	65	70	

*Each plate weights 10 lbs.

*Numbers are approximate. Actual weight may vary.

*Value for butterfly is for each arm.

IMPEX INC.

LIMITED WARRANTY

IMPEX Inc. ("IMPEX") warrants this product to be free from defects in workmanship and material, under normal use and service conditions, for a period of two years on the Frame from the date of purchase. This warranty extends only to the original purchaser. IMPEX's obligation under this Warranty is limited to replacing or repairing, at IMPEX's option.

All returns must be pre-authorized by IMPEX. Pre-authorization may be obtained by calling IMPEX Customer Service Department at 1-800-999-8899. All freights on products returned to IMPEX must be prepaid by the customer. This warranty does not extend to any product or damage to a product caused by or attributable to freight damage, abuse, misuse, improper or abnormal usage or repairs not provided by an IMPEX authorized service center or for products used for commercial or rental purposes. No other warranty beyond that specifically set forth above is authorized by IMPEX.

IMPEX is not responsible or liable for indirect, special or consequential damages arising out of or in connection with the use or performance of the product or other damages with respect to any economic loss, loss of property, loss of revenues or profits, loss of enjoyments or use, costs of removal, installation or other consequential damages or whatsoever natures. Some states do not allow the exclusion or limitation of incidental or consequential damages. Accordingly, the above limitation may not apply to you.

The warranty extended hereunder is in lieu of any and all other warranties and any implied warranties of merchantability or fitness for a particular purpose is limited in its scope and duration to the terms set forth herein. Some states do not allow limitations on how long an implied warranty lasts. Accordingly, the above limitation may not apply to you.

This warranty gives you specific legal right. You may also have other rights which vary from state to state. **Register on-line at www.impex-fitness.com**

**IMPEX INC.
14777 Don Julian
City of Industry, CA 91746**

ORDERING REPLACEMENT PARTS

Replacement parts can be ordered by calling our Customer Service Department toll-free at **1-800-999-8899** during our regular business hours: Monday through Friday, 9 am until 5 pm Pacific standard time.

info@impex-fitness.com

When ordering replacement parts, always give the following information.

1. Model
2. Description of Parts
3. Part Number
4. Date of Purchase